

Commitment to Excellence

PROSPECTUS
2016/2017

Table of Contents

General

A Welcome Message.....	2
Vision & Mission.....	3
Partnerships & Accreditations.....	4
Our University Partner.....	6
Profile & Resources.....	7
Entry Requirements.....	11
How to Apply.....	12

Programmes Offered

Undergraduate

Higher National Diploma HND	
Higher National Certificate HNC	14
Business..... HNC.....	14
Business Management..... HND.....	16
Civil Engineering..... HND/HNC.....	18
Computer Game Design..... HND/HNC.....	20
Electrical and Electronic Engineering..... HND/HNC.....	22
Health and Social Care..... HND/HNC.....	24
Health and Social Care Management..... HND.....	26
Hospitality Management..... HND/HNC.....	28
Travel and Tourism Management..... HND/HNC.....	30

Degree Top-Up	32
BA (Hons) Business Management..... Top-Up.....	32
BSc (Hons) Civil Engineering..... Top-Up.....	34
BSc (Hons) Electrical and Electronic Engineering..... Top-Up.....	36
BA (Hons) Health and Social Care..... Top-Up.....	38
BA (Hons) International Hospitality Management..... Top-Up.....	40
BA (Hons) International Tourism Management..... Top-Up.....	42

Postgraduate Diploma

Hospitality and Tourism Management..... PgDip.....	44
--	----

Supporting Information

International Qualifications.....	45
Campus Location.....	47
Notes.....	49

Welcome Message



Welcome to The London College, UCK, one of the most established and successful independent higher education providers in Greater London. We have around 1000 students, from many different backgrounds and with different ambitions and aspirations, enrolled with us on a wide range of courses. Whether you are leaving school, interested in higher education courses, are an international student, want to study part-time at weekends, improve your job prospects or would just like to study something new, we have the right course for you. We pride ourselves in offering our students a first rate learning experience that stems from high quality teaching staff and a well-stocked library and learning resource centre with additional IT suites and a range of science and engineering laboratories. You will find yourself in small yet diverse classes with plenty of individual attention from lecturers and administrative staff who offer support both academically and pastorally.

The college offers a range of Pearson Higher National Certificate/ Diplomas particularly in the areas of engineering, business, hospitality, travel and tourism, health and social care. In 2013 the University of Derby accredited the college partner status and since then have offered 7 highly successful top-up degrees following numerous requests where students wish to remain at the college to complete their degree. In 2016 there will be over 150 students graduating with University of Derby degrees. We look forward to welcoming you to the college.

Dr Mark Mabey
Principal





Vision & Mission

Our intention is that This College will become the institution of opportunity that is renowned for its widening participation. We will develop our students and staff to reach for vocational excellence and become recognised as a leading alternative provider of quality higher education programmes.

Furthermore, This College will be an employer-focused institution connected with our local communities, providing teaching and learning which opens doors and meets the needs of employers.

Our Core Values

The College has a strong sense of identity and aspires to deliver the right programmes, in the right way, to meet the needs of a very diverse student population.

At The College, we strive to be a well-established, highly experienced, independent higher education provider with a proven track record in delivering a wide range of undergraduate and postgraduate programmes.

Our success has been achieved through high quality teaching and learning delivered through small class size. This sets us apart from our competitors.



Partnerships and Accreditations

The Quality Assurance Agency for Higher Education (QAA)

QAA Reviewed

Quality Assurance Agency
for Higher Education

UCK trading as The London College received a commendable outcome from the monitoring visit by the Quality Assurance Agency for Higher Education (QAA) in 2014 and submitted an annual return in February 2015 that demonstrates that it is continuing to maintain academic stand-

ards and enhance the quality of student learning opportunities and information about learning opportunities.

The College has received the following judgements from QAA:

The review team has **confidence** in The London College, UCK's management of its responsibilities for the standards of the awards it offers on behalf of its awarding body and organisations.

The review team has **confidence** that The London College, UCK is fulfilling its responsibilities for managing and enhancing the quality of the intended learning opportunities it provides for students.

The review team concludes that **reliance can be placed** on the accuracy and completeness of the information that The London College, UCK is responsible for publishing about itself and the programmes it delivers.

Accreditation Service for International Colleges - ASIC



The College has been accredited by the Accreditation Service for International Colleges (ASIC) and has been awarded a 'Premier College' status.

ASIC provides an accreditation service for independent higher education colleges.

ASIC is recognised by the Department for Business, Innovation, Skills (BIS) and the Home Office for Immigration Points Based System.

ASIC accreditation gives reassurance to potential students, their parents and education representatives that their chosen college conforms to relevant United Kingdom laws and regulations and offers courses leading to recognised qualifications.

ASIC is also recognised by the Council for Higher Education Accreditation, Washington DC, USA.



Home Office – UK Visas and Immigration



The College is an Approved London Partner of the University of Derby.

PEARSON

The College is an approved Pearson centre for BTEC qualifications.

Pearson is the UK's largest awarding organisation offering qualifications to schools, colleges and employers internationally.

NCFE



NCFE is a national awarding organisation, passionate about designing, developing and certifying diverse, nationally recognised qualifications and awards. The College holds an Investing in Quality Licence awarded by the NCFE.



Memberships



UCAS Membership
(Undergraduate Admissions)
The college is a member of UCAS.
Our institution code is L62.



UKPASS Membership
(Postgraduate Admissions)
The college is a member of UKPASS.
Our institution code is L62.



Our University Partners

The University of Derby is one of the highest ranked post 1992 Universities in the sector compared to their London counterparts.

Recent Successes

- 96.1% of full time first degree graduates are in work or further study making us 12th in the UK (ninth in England) for student employability.
- Ranked first for student support and faith provision, and third for lecture quality, learning technology and employability, out of all the UK's modern universities*.
- Winners of the 2011 Times Higher Education awards in the outstanding contribution To The Local Community category.
- Winners of the 2011 Times Higher Education awards in the Outstanding Employer Engagement Initiative category.
- Shortlisted in the category of 'Midlands Enterprising University of the Year'.
- Winners of the Outstanding Leadership and Management Team category at the 2010 THE Leadership and Management Awards.

*Results from an independent survey of international students studying at UK universities that belong to the Million+ group.



Some key facts about the university:

- 50% of University of Derby students achieve a First Class honours degree or a 2:1
- Ranked 1st for student support and faith provision (Million +).
- Around 30,000 students study with the University of Derby.

The College became a partner of the University in April 2013 and since September 2013 has successfully delivered seven top-up degree programmes.

The College Location and Facilities

London is a very cosmopolitan city. It is both a historic capital and a hotbed of new ideas and innovation. It is a city of parks, culture and commerce, and is home to many world-renowned museums, galleries and famous buildings. It is a hugely exciting place to live and work.

London's famous landmarks such as Buckingham Palace, Houses of Parliament, Big Ben, Tower of London, Hyde Park, Tate Britain and Tate Modern, the London Eye, Madame Tussauds, the British Museum and Victoria Albert Museum are amongst the perks of living in this exciting metropolis.

The college is located in Notting Hill Gate. Notting Hill Gate is both truly British and cosmopolitan, a home to politicians, celebrities and internationally famous Notting Hill Gate Carnival and Portobello Market.

The nightlife is great around the area as Notting Hill has many clubs, bars, restaurants and pubs. Art and culture lovers may enjoy an evening out at the Gate Theatre or the Gate Cinema.

College Campus

The College is located in a close proximity to Notting Hill Gate and Holland Park underground stations.

The facilities around the campus are excellent and include public libraries, shops, supermarkets, restaurants, cafeterias, theatres, hostels, banks, cinemas and public parking provision.

The campus learning resources comprise: library, technical laboratories (biology, science, engineering, computing and graphic design); visual aids such as overhead projectors, televisions, video recording and editing equipment; photocopying and printing facilities; a wide range of software applications.

The college is open from 8.00 to 20.00 Monday to Friday and 9.00 to 16.00 on Saturdays (except for college and statutory holidays).



Library and Learning Resources

The college library is managed by a professional librarian and contains a full range of continuously updated textbooks for all the courses offered by the college. There are also a large number of texts relating to study skills such as project research and essay and dissertation writing.

The college also has a collection of some 1000 academic, trade and professional journals available electronically and in full text; they are searchable individually and as collections. Additional advanced specialist resources are available for those students proceeding to study for honours degrees.

Knowledgeable and approachable library staff are available to assist students in locating material and developing research skills that will be of assistance in their studies.

Computing Facilities

Computer laboratories and laptops, which can be loaned for students and staff, are available for the independent study and research. Our computing facilities offer a selection of art, graphics, multimedia, animation and CAD software; engineering simulation programmes and programming languages. Students have free access to computing facilities and Wi-Fi.

The College also runs its own Web Mail server and Intranet for students and staff.

We continually upgrade and develop our computing facilities to keep up with the developing technology for the benefit of our students.





Refreshments

We are situated in an area well provided with a wide variety of popular supermarkets, chain food outlets, restaurants, bars, cafeterias and sandwich shops. These offer traditional English, Italian, French, Asian and Mediterranean menus.

Sport Facilities

Health clubs, leisure centres and swimming pools are located near the college. Information on sport facilities, as well as, the guidance on obtaining their membership is provided.



Teaching and Learning

Our highly qualified and experienced lecturers are one of our greatest assets. They deliver a varied portfolio of qualifications in a range of study majors. Our lecturers have teaching, practical, as well as, professional experience in their specialist subject areas.

Low student to faculty ratio means that lecturers provide individual attention to our students. We are proud to keep our classes relatively small.

You will be taught through a combination of lectures, seminars and practical laboratory sessions, depending on your study major.

Your studies will be supported by field trips, visits to exhibitions, career fairs and guest speakers from the industry and professional bodies.

You will be assessed through individual and group projects, case studies, oral presentations, written and time constrained assignments.

Student Support

Support is provided in the following areas:

- Academic progress
- Money and funding
- Safety and Security
- Academic writing and study skills
- English as a Foreign Language
- Careers
- Applying for further study



Entry Requirements

Higher National Certificate and Higher National Diploma

If you are under 21 years of age at the start of the course, you must have at least one of the following:

- At least one GCE A-level pass. In addition, you should have appropriate supporting passes at GCSE (including English and Maths at grade C or above) or Key Skills Level 2 qualifications in communication, IT and Application of Number or equivalent.
- Level 3 qualification such as: BTEC level 3 Diploma, National Diploma, Advanced GNVQ/NVQ, AVCE/VCE, Foundation Certificate in a relevant subject
- Access to Higher Education in a relevant subject
- Advanced Modern Apprenticeship with Level 3 qualifications in a relevant subject
- Baccalaureate/International Baccalaureate
- An equivalent foreign qualification
- Any other level 3 qualification in a relevant subject

If you are over 21 years of age, you may demonstrate a more varied profile of achievement that is likely to include relevant work experience and/or achievement of a range of professional qualifications in their work sector.

Higher National Diploma – Year 2 entry

Any prior learning and experience may be taken into consideration and appropriate accreditation of prior learning (APL) may be granted on the submission of the required evidence.

If you are under 21 years of age at the start of the course, you must have at least one of the following:

- BTEC HNC in a relevant subject
- Other level 4 qualification in a relevant subject – subject to approval
- Completed Year 1 of a Foundation degree or a Bachelor degree in a relevant subject – subject to approval

Bachelor Degree Top-up

- Higher National Diploma in a related major
- Foundation Degree/DipHE in a related major
- Successful completion of two years of a degree programme in a related major showing the equivalent of 240 credit points at levels 4 and 5

3-Year degree entry requirements

Normally, five GCSEs at grade C or above including English language and mathematics, plus one of the following

- 300 points including at least 160 points from two GCE/VCE A levels or BTEC National qualifications or one AVCE double award. We accept general studies. Key Skills qualifications are not included.
- GNVQ – advanced level 3 in 12 modules with overall distinction or in 16 modules with overall merit.
- Access – an Access to HE Diploma with at least 45 credits at level 3 and 15 credits at level 2. At least 15 Level 3 credits must be at merit grade or above, from a QAA-recognised Access to HE course, or an equivalent Access to HE certificate.

If English is not your first language you need an IELTS score of 6.0 or above, with a minimum score of 5.5 in each skill.

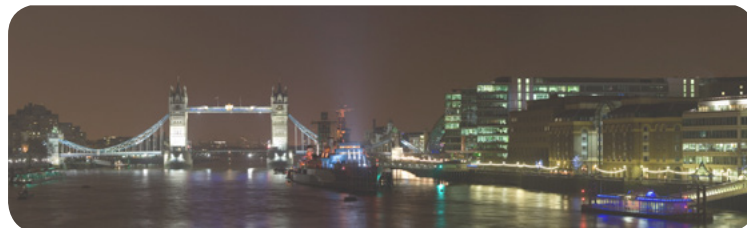
You can apply for advanced entry on to this course, depending on the number of relevant QCF credits completed and passed.

If you do not have any of the qualifications above but have relevant experience you are welcome to discuss potential opportunities with the admissions tutor.

Postgraduate qualifications

You will need to have at least one of the following:

- Bachelor degree or other level 6 qualification.
- Higher National Diploma/Foundation degree/DipHE in a related subject supplemented by relevant work experience.
- An equivalent foreign qualification.



English Requirement for UK/EU Students

Applicants whose first language is not English must show evidence of a good level of competence in both written and spoken English. The following qualifications (or their equivalents) are acceptable as a minimum level of competence in English for undergraduate study:

- O Level/GCSE/IGCSE/A-level/AS-level English Language Examination: Pass at C grade
- British Council IELTS Academic English Test:
An overall band of 5.0 for undergraduate and 6.0 for postgraduate programmes
- Cambridge First Certificate, Certificate in Advanced English or Proficiency in English: Pass at grade C
- Internet Based Test TOEFL
Minimum score of 70
- Pearson Test of English (PTE)
A score of at least 43 in each component
- City & Guilds (Pitman Examination in International ESOL):
Pass at level B1
- Any other test score at CEFR level B1 for undergraduate or CEFR level B2 for postgraduate programmes.
- European School Leaving/Matriculation Certificates (Matura/Maturita or equivalent)
A score of at least 'good' or 'very good' or its numerical equivalent



How to Apply

Apply through UCAS

If you are applying for FULL TIME undergraduate courses such as Higher National Certificate, Higher National Diploma or a Bachelor degree you should apply through UCAS.

The UCAS institution code for The London College UCK is L62.

When applying you also need to know UCAS code for your course e.g. 001N. Please make sure that you copy the code names and code numbers correctly onto the UCAS application form.

UCAS provides comprehensive information the application process at www.ucas.com

Start Dates

September and January of each academic year.

Closing date for applications for UK/EU students

On-time applications must be made between 1st September and 15th January. The closing date for UCAS on-time applications is 15th January.

Late applications (received after January 15th) will be considered but applying late may reduce your chances of being accepted.

Applications received after 30th June will go into the clearing scheme operating in summer.

If you are applying for courses starting in January, you should apply by November 30th.

Apply directly to the College

Undergraduate part-time courses

If you are applying for an undergraduate part-time course, you should apply directly to the college. You must apply online.

Application procedure:

Select the course which is right for you.

Scan your documents and save in a PDF or JPEG format.

Apply online directly to the College.



In addition to your on-line application you will be required to upload copies of the following documents:

- Front cover of your passport
- Photo page from your passport

Postgraduate full-time and part-time

If you are applying for a full-time or part-time postgraduate course you should apply directly to the college. You must apply online.

- Select the course which is right for you.
- Scan your documents and save in a PDF or JPEG format.
- Apply online directly to the College.

In addition to your online application you will be required to upload copies of the following documents:

- Front cover of your passport
- Photo page from your passport

When do I need to apply?

Direct applications are taken throughout the year. However, to ensure that your application is processed on time we suggest that you apply by:

UK/EU Students:

August 31st - September entry / December 31st - January entry

How is my application processed?

When we have received your application form it will be considered for admission to your chosen course of study.

UK/EU applicants may be interviewed in person or by telephone.

Successful applicants will receive either a conditional offer of admission or an unconditional offer of admission.

What is a conditional offer?

- there are conditions attached to your offer, for example, you need to complete a qualification or attend an interview, present a proof of funding or maintenance funds or pay your fees, before you can enroll, attend induction and start your course.

What is an unconditional offer?

- you have fully satisfied academic and other requirements for the course. You need to enroll, attend induction and start your course.

Together with your offer letter, you will be sent an offer letter and a student response form. You must complete a student response form and return it to the Admissions Office.

If you are a UK/EU student are required to arrange for funding to be in place before you start your course.



HNC Higher National Certificate Business



Programme Fact File

Start Dates	September and January
Entry Requirements	Please see page 10
Study Mode and Duration	HNC Full-Time: 1 year, Part-Time (Day): 2 years
UCAS Code	HNC:101N
Accreditation	HNC: Pearson BTEC (RQF Level 4)

Programme Overview

BTEC Higher National Diploma and Higher National Certificate in Business are specialist vocational programmes, linked to professional body requirements and with a strong work related emphasis.

These programmes provide a combination of theoretical ideas and practical techniques, which gives a thorough grounding for a variety of careers in a range of management functions such as general management, business planning, financial planning and human resource management. These varied and interesting courses teach you what it takes to manage a successful business or organisation.

You will be taught through a combination of lectures, seminars and tutorials. Your studies will be supported by trips to trade exhibitions, career fairs and guest speakers from the industry. You will also develop your transferable skills such as critical analysis, project management, strategic planning and efficient business communication, to ensure that you have the awareness to succeed in the changing business world.

You will be assessed through individual and group projects, case studies, oral presentations, time-constrained and written assign-

Professional Recognition

BTEC qualifications are nationally and internationally recognised by employers and professional organisations.

Their recognition is a way for students to prepare for jobs and careers in their chosen field through membership of relevant professional bodies. Students and graduates may be offered exemptions by professional bodies from parts of their own qualifications in relation to membership.

Exemptions will be available from various professional bodies in the fields of accounting, management, law and marketing.

HNC Progression

BTEC Higher National Certificates are well-established and internationally recognised qualifications offering graduates direct progression to employment. Successful completion of your Higher National Certificate can lead to employment in management, business, sales, buying, finance and administration.

You can also study further for a Higher National Diploma or degree

Programme Content

You will study these modules:

HNC in Business (RQF Level 4)

Year 1

- Business and the Business Environment
- Marketing Essentials
- Human Resource Management
- Management and Operations
- Management Accounting
- Managing Successful Business Project
- Innovation and Small Business Management
- Entrepreneurship and Small Business Management



HND Higher National Diploma Business Management



Programme Fact File

Start Dates	September and January
Entry Requirements	Please see page 10
Study Mode and Duration	HND: Full-Time: 2 years, Part-Time (Day): 3 years, Part-Time (Weekend): 3 years
UCAS Code	002N
Accreditation	HND: Pearson BTEC (RQF Level 5)

Programme Overview

BTEC Higher National Diploma in Business Management is a specialist vocational programme, linked to professional body requirements and with a strong work related emphasis.

This programme offers you the opportunity to develop a comprehensive understanding of the functions and processes for managing organisations. Covering the core concepts, practices and techniques of management, you will develop analytical, quantitative and presentation skills required by employers in both the private and public sectors.

The course combines business and management subjects. You will explore key business areas, such as organisational behaviour, strategic planning, European business, finance and people management.

You will be taught through a combination of lectures, seminars and tutorials. Your studies will be supported by trips to trade exhibitions, career fairs and guest speakers from the industry. You will also develop your transferable skills such as critical analysis, project management, strategic planning and efficient business communication, to ensure that you have the awareness to succeed in the changing business world.

You will be assessed through individual and group projects, case studies, oral presentations, time-constrained and written assignments.

Professional Recognition

BTEC qualifications are nationally and internationally recognised by employers and professional organisations.

The recognition of the BTEC Higher National Diploma (HND) is a way for students to prepare for jobs and careers in their chosen field through membership of relevant professional bodies.

Students and graduates may be offered exemptions by professional bodies from parts of their own qualifications in relation to membership. Exemptions will be available from various professional bodies in the fields of human resources, management, accounting, law and marketing.

HND Progression

BTEC Higher National Diplomas are well-established and internationally recognised qualifications to offering graduates progression directly to employment. Successful completion of the course can lead to employment in human resource management, employee relations, training and professional development, as well as, in general management in the commercial or public/voluntary sectors.

On successful completion of your Higher National Diploma you can progress directly to a 1-year BA (Hons) degree top up.

Programme Content

You will study these modules:

HND in Business Management (RQF Level 5)

Year 1

- Business and the Business Environment
- Marketing Essentials
- Human Resource Management
- Management and Operations
- Management Accounting
- Managing Successful Business Project
- Entrepreneurship and Small Business Management
- Financial Accounting

Year 2

- Research Project (Through Module-taught over two semesters)
- Organisational Behaviour
- Understanding and Leading Change
- Global Business Environment
- Research Project (Through Module-taught over two semesters)
- Business Strategy
- Consumer behaviour and Insight
- Operations and Project Management



HND Higher National Diploma
HNC Higher National Certificate
Civil Engineering



Programme Fact File

Start Dates	September and January
Entry Requirements	Please see page 10
Study Mode and Duration	HND: Full-Time: 2 years, Part-Time (Day): 3 years, Part-Time (Weekend): 3 years HNC: Full-Time: 1 year, Part-Time (Day): 2 years Part-Time (Weekend) : 2 years
UCAS Code	HNC: 202H HND: 302H
Accreditation	HNC: Pearson BTEC (QCF Level 4) HND: Pearson BTEC (QCF Level 5)

Programme Overview

BTEC Higher National Diploma and Higher National Certificate in Civil Engineering are specialist vocational programmes, linked to professional body requirements and with a strong work related emphasis. Civil Engineers design, construct and shape our environment.

These courses will introduce you, in the 1st year, to the key knowledge and skills in construction, the built environment and civil engineering. You will explore engineering design, materials, surveying, geology, structures and health and safety. You will also undertake a group project module, in which you will apply what you have learned to solving a design challenge of your choice.

Building on this, in your 2nd year you will study the application of these principles in the key civil engineering discipline areas of structures, hydraulics and management. You will also have the opportunity to pursue a particular subject of your own interest in an individual research project.

You will be taught through a combination of lectures, tutorials and practical laboratory sessions. Your studies will be supported by trips to trade exhibitions, career fairs and guest speakers from the industry. You will also develop your transferable skills such as critical analysis, problem solving, negotiation, team work and planning to ensure that you have the awareness to succeed in the changing engineering sector.

You will be assessed through individual and group projects, case studies, oral presentations, time-constrained and written assignments.

Professional Recognition

The following is an indication of relevant professional bodies that recognise the BTEC Higher Nationals in Construction and the Built Environment (Civil Engineering) and their recommended unit structure, as qualifications that contribute towards their requirements and also meet the requirements of the Engineering Council (UK) – Standards for Professional Engineering Competence:

- Chartered Institution of Highways and Transportation (CIHT)
- Institution of Civil Engineers (ICE)
- Institute of Highway Engineers (IHE)
- Institution of Structural Engineers (IStructE).

In addition to individual recognition by the main professional bodies, the BTEC Higher Nationals in Construction and the Built Environment have also been validated and approved

by the Construction Skills Standards and Qualifications Validation Group (SQVG) which represents the construction and built environment sector.

HNC Progression

BTEC Higher National Certificates are well-established and internationally recognised qualifications offering graduates progression directly to employment. This course will prepare you for a range of civil engineering careers within public and private sectors.

You can also study further for a Higher National Diploma or a degree in Civil Engineering.

HND Progression

BTEC Higher National Diplomas are well-established and internationally recognised qualifications offering progression directly to employment. This course will prepare you for a range of civil engineering careers within public and private sectors.

On successful completion of your Higher National Diploma you can progress directly to a 1-year BSc (Hons) Top Up degree in Civil Engineering.

Programme Content

You will study these modules:

HNC in Civil Engineering (QCF Level 4)

- Design Principles and Application
- Science and Materials
- Applied Mathematics
- Group Project in the Construction Industry
- Site Surveying Procedures
- Engineering Geology and Soil Mechanics
- Civil Engineering Technology
- Structural Analysis and Design



HND in Civil Engineering (QCF Level 5)

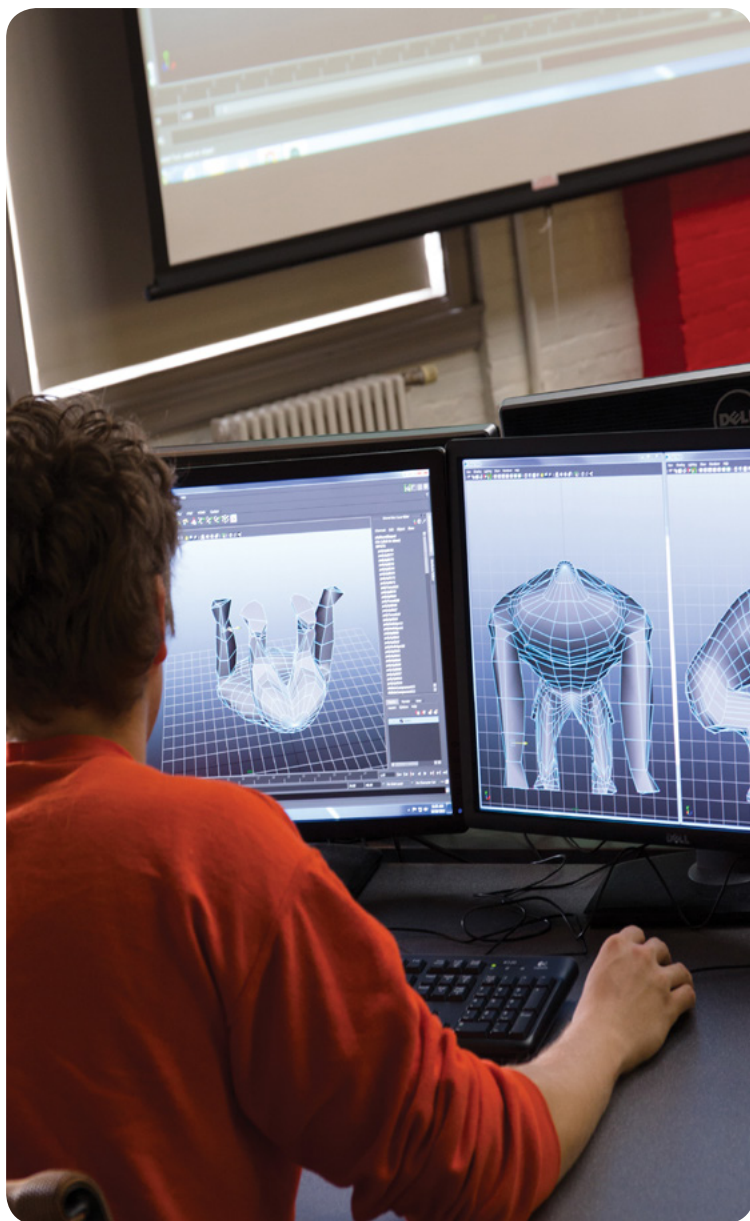
Year 1

- Design Principles and Application
- Science and Materials
- Applied Mathematics
- Health, Safety and Welfare
- Site Surveying Procedures
- Engineering Geology and Soil Mechanics
- Civil Engineering Technology
- Structural Analysis and Design

Year 2

- Management Principles and Application
- Group Project in the Construction Industry
- Contractual Procedures and Procurement
- Measuring, Tendering and Estimating
- Applied Mathematics for Complex Engineering Problems
- Advanced Civil Engineering
- Hydraulic Principles and Applications
- Research Project

**HND Higher National Diploma
HNC Higher National Certificate
Computer Game Design**



Programme Fact File

Start Dates	September and January
Entry Requirements	Please see page 10
Study Mode and Duration	HND: Full-Time: 2 years, Part-Time (Day): 3 years, HNC: Full-Time: 1 year, Part-Time (Day): 2 years
UCAS Code	HNC: 354G HND: 154G HNC: Pearson BTEC (QCF Level 4) HND: Pearson BTEC (QCF Level 5)
Accreditation	

Programme Overview

BTEC Higher National Diploma and Higher National Certificate in Computer Game Design are specialist vocational programmes, linked to professional body requirements and with a strong work related emphasis. These innovative courses, derived from professional standards and principles, will allow you to develop a range of practical skills for the design of computer games. It provides a wide range of transferable skills, such as problem solving, negotiating, critical analysis and project management. The courses adopt a hands-on approach, encouraging you to be creative and imaginative. You will be encouraged to think in terms of generating, developing and implementing real-life games design projects to understand how modules studied integrate with industrial practice. You explore topics in ideas generation, principles of game design, computer platforms, scripting, storytelling, music and sound, research and creative media.

You will be taught through a combination of practical laboratory sessions and seminars. Your studies will be supported by trips to trade exhibitions, career fairs and guest speakers from the industry.

This course is assessed through practical game design projects, reports, group work, case studies, presentations and written reports.

Professional Recognition

BTEC qualifications are nationally and internationally recognised by employers and professional organisations. This recognition is a way for students to prepare for jobs and careers in their chosen field through membership of relevant professional bodies.

The HNC/HND in Computer Game Design have the support of Skillset, the Sector Skills Council for the creative media sector.

HNC Progression

BTEC Higher National Certificates are well-established and internationally recognised qualifications to offering graduates progression directly to employment.

On successful completion of this course, you will be able to apply for work as a game designer within the games, film and TV production industries. You can also study further for a Higher National Diploma in Computer Game Design or a Bachelor degree.

HND Progression

BTEC Higher National Diplomas are well-established and internationally recognised qualifications to offering graduates progression directly to employment. You will be able to apply for work as a game designer within the games, film and TV production industries.

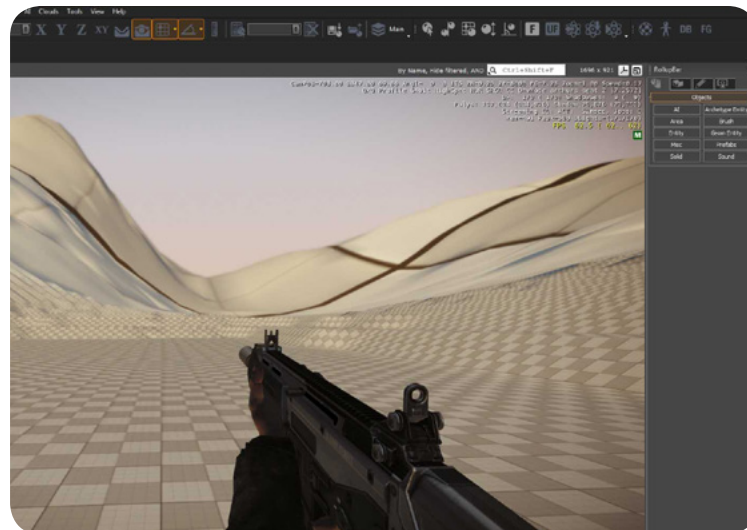
On successful completion of your Higher National Diploma you can progress directly to a 1-year degree top up in a relevant subject.

Programme Content

You will study these modules:

HNC in Computer Game Design (QCF Level 4)

- Contextual Studies
- Research Techniques
- Practical Skills
- Computer Game Studies
- Computer Game Platform Fundamentals
- Computer Game Storytelling Techniques
- Ideas Generation for Computer Games
- Computer Game Design Techniques



HND in Computer Game Design (QCF Level 5)

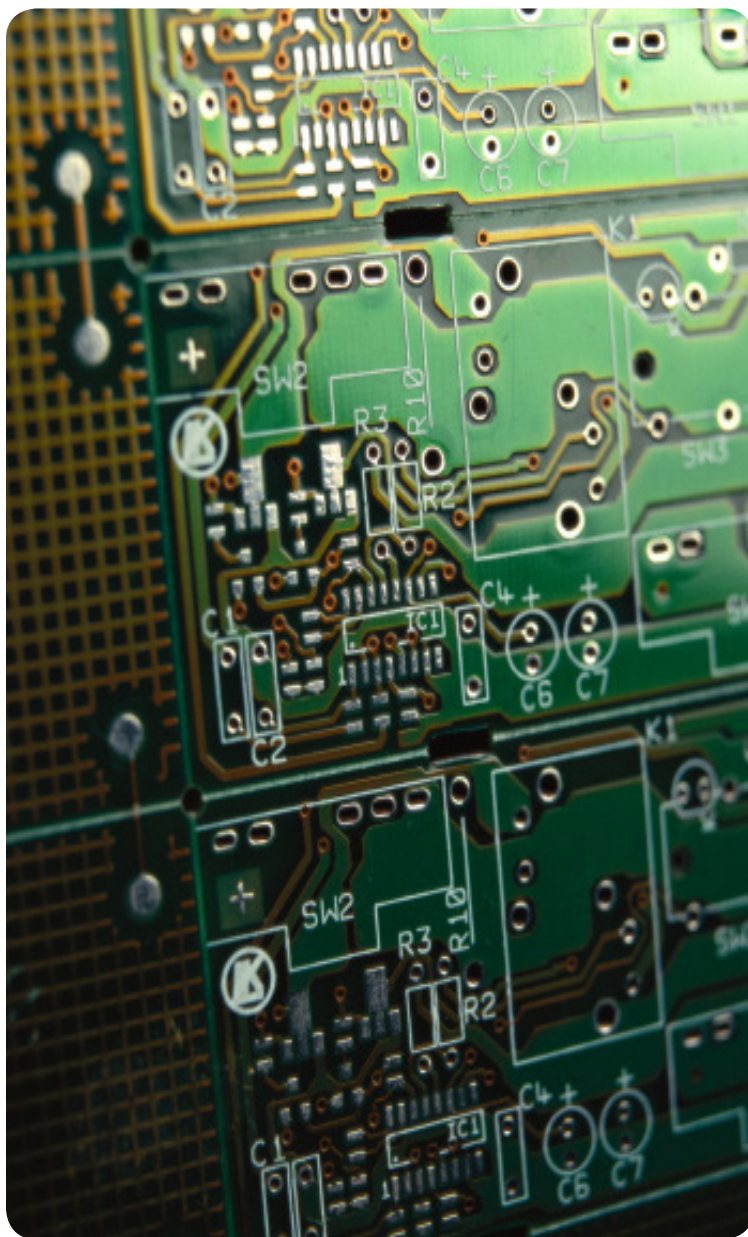
Year 1

- Contextual Studies
- Research Techniques
- Practical Skills
- Computer Game Studies
- Computer Game Platform Fundamentals
- Computer Game Storytelling Techniques
- Ideas Generation
- Computer Game Design Techniques

Year 2

- Project Design, Implementation and Evaluation
- Special Subject Investigation
- Career Development for Computer Games Industry
- Music and Sound for Computer Games
- Production Techniques for Computer Games
- Level Design for Computer Games
- Scripting for Computer Game Design
- Quality Assurance for Computer Games

HND Higher National Diploma
HNC Higher National Certificate
Electrical and Electronic Engineering



Programme Fact File

Start Dates	September and January
Entry Requirements	Please see page 10
Study Mode and Duration	HND: Full-Time: 2 years, Part-Time (Day): 3 years, Part-Time (Weekend): 3 years
UCAS Code	HNC: Full-Time: 1 year, Part-Time (Day): 2 years Part-Time (Weekend) : 2 years
Accreditation	HNC: 106H HND: 006H HNC: Pearson BTEC (QCF Level 4) HND: Pearson BTEC (QCF Level 5)

Programme Overview

BTEC Higher National Certificate and Higher National Diploma in Electrical and Electronic Engineering are specialist vocational programmes, linked to professional body requirements and with a strong work related emphasis. These courses will introduce you to the key knowledge and skills in electrical and electronic engineering.

You will explore engineering principles and science, circuit design and health and safety. You will also undertake a group project module, in which you will apply what you have learned to solving a design challenge of your choice.

You will be taught through a combination of lectures, tutorials and practical laboratory sessions. Your studies will be supported by trips to trade exhibitions, career fairs and guest speakers from the industry.

You will also develop your transferable skills such as critical analysis, problem solving, negotiation, team work and planning to ensure that you have the awareness to succeed in the changing engineering sector. You will be assessed through individual and group projects, case studies, oral presentations, time-constrained and written assignments.

Professional Recognition

BTEC Higher National Certificate (HNC) and Higher National Diploma (HND) qualifications are internationally recognised by employers and professional organisations. The recognition is a way for students to prepare for jobs and careers in the engineering sector through membership of relevant professional bodies.

The development of this qualification has been informed by discussions/relevant publications from the Engineering Council UK (EC (UK)) and the Science, Engineering and Manufacturing Technologies Alliance (SEMTA). Graduates with relevant work experience qualify for the Technician Membership of the Institution of Engineering and Technology (UK).

HNC Progression

BTEC Higher National Certificates are well-established and internationally recognised qualifications offering progression directly to employment. This course will prepare you for a range of engineering careers within public and private sectors. You can also study further for a Higher National Diploma or a degree in Electrical and Electronic Engineering.

HND Progression

BTEC Higher National Diplomas are well-established and internationally recognised qualifications offering progression directly to employment. This course will prepare you for a range of engineering careers within public and private sectors.

On successful completion of your Higher National Diploma you can progress directly to a 1-year BSc (Hons) Top Up degree in Electrical and Electronic Engineering.

Programme Content

You will study these modules:

HNC in Electrical and Electronic Engineering (QCF Level 4)

- Analytical Methods for Engineers
- Engineering Science
- Project Design, Implementation and Evaluation
- Electrical and Electronic Principles
- Health, Safety and Risk Assessment for Engineering
- Electronic Computer-Aided Design
- Microprocessor Systems
- Electrical Power



You will study these modules:

HND in Electrical and Electronic Engineering (QCF Level 5)

Year 1

- Analytical Methods for Engineers
- Engineering Science
- Project Design, Implementation and Evaluation
- Electrical and Electronic Principles
- Health, Safety and Risk Assessment for Engineering
- Electronic Computer-Aided Design
- Electrical Power
- Microprocessor Systems

Year 2

- Engineering Design
- Digital and Analogue Devices and Circuits
- Telecommunications Principles
- Further Analytical Methods for Engineers
- Electronic Principles
- Research Project
- Advanced Mathematics for Engineering
- Applications of Power Electronics

**HND Higher National Diploma
HNC Higher National Certificate
Health and Social Care**



Programme Fact File

Start Dates	September and January
Entry Requirements	Please see page 10
Study Mode and Duration	HND: Full-Time: 2 years, Part-Time (Day): 3 years, HNC: Full-Time: 1 year, Part-Time (Day): 2 years
UCAS Code	HNC: 115L HND: 015L
Accreditation	HNC: Pearson BTEC (QCF Level 4) HND: Pearson BTEC (QCF Level 5)

Programme Overview

BTEC Higher National Certificate and Higher National Diploma in Health and Social Care are specialist vocational programmes, linked to professional body requirements and with a strong work related emphasis. They provide a thorough grounding in the key concepts and practical skills required in the health and social care sector.

These courses place a strong emphasis on development of transferable skills, e.g. effective oral and written communication, critical analysis, planning, problem solving, project management and team work, to ensure that graduates have the awareness to succeed in the changing health and social care environment.

You will explore key health and social care areas such as communication, health and safety, social context, working in partnership and professional development.

You will be given an opportunity to apply knowledge and practical skills gained in the workplace. You will do this through a work placement or paid employment.

You will be taught through a combination of lectures, seminars and tutorials. Your studies will be supported by trips to trade exhibitions, career fairs and guest speakers from the industry. You will be assessed through individual and group projects, case studies, oral presentations, time-constrained and written assignments.

Professional Recognition

BTEC qualifications are nationally and internationally recognised by employers and professional organisations. The recognition of the BTEC Higher National Certificate is a way for students to prepare for jobs and careers in their chosen field through membership of relevant professional bodies.

HNC Progression

BTEC HNC in Health and Social Care prepares you for a wide range of careers in health and social care institutions, e.g. hospitals, hospices, day centres and care homes. Career pathways include health promotion, welfare, social work, management, probation, education welfare, education support and occupational therapy. You can also study further for a Higher National Diploma or degree in a related subject.

HND Progression

BTEC HND in Health and Social Care prepares students for a wide range of careers in health and social care institutions, e.g. hospitals, hospices, day centres and care homes.

Career pathways include health promotion, welfare, social work, management, probation, education welfare, education support and occupational therapy. On successful completion of your Higher National Diploma you can progress directly to a 1-year BA (Hons) degree top up.

Programme Content

You will study these modules:

HNC in Health and Social Care (QCF Level 4)

- Communicating in Health and Social Care Organisations
- Principles of Health and Social Care Practice
- Health and Safety in the Health and Social Care Workplace
- Personal and Professional Development in Health and Social Care
- Working in Partnership in Health and Social Care
- The Sociological Context of Health and Social Care
- Safeguarding in Health and Social Care
- Physiological Principles for Health and Social Care



HND in Health and Social Care (QCF Level 5)

Year 1

- Communicating in Health and Social Care Organisations
- Principles of Health and Social Care Practice
- Health and Safety in the Health and Social Care Workplace
- Personal and Professional Development in Health and Social Care
- Working in Partnership in Health and Social Care
- The Sociological Context of Health and Social Care
- Safeguarding in Health and Social Care
- Physiological Principles for Health and Social Care

Year 2

- Research Project
- Managing Human Resources in Health and Social Care
- Understanding Specific Needs in Health and Social Care
- Contemporary Issues in Health and Social Care
- Supporting Significant Life Events
- Developing Counselling Skills for Health and Social Care
- Managing Quality in Health and Social Care
- Health Promotion

HND Higher National Diploma Health and Social Care Management



Programme Fact File

Start Dates	September and January
Entry Requirements	Please see page 10
Study Mode and Duration	HND: Full-Time: 2 years, Part-Time (Day): 3 years,
UCAS Code	HND: 015L
Accreditation	HND: Pearson BTEC (QCF Level 5)

Programme Overview

BTEC Higher National Certificate and Higher National Diploma in Health and Social Care are specialist vocational programmes, linked to professional body requirements and with a strong work related emphasis. They provide a thorough grounding in the key concepts and practical skills required in the health and social care sector.

These courses place a strong emphasis on development of transferable skills, e.g. effective oral and written communication, critical analysis, planning, problem solving, project management and team work, to ensure that graduates have the awareness to succeed in the changing health and social care environment.

You will explore key health and social care areas such as health and safety, social context, working in partnership, human resources, financial management and professional development.

You will be given an opportunity to apply knowledge and practical skills gained in the workplace. You will do this through a work placement or paid employment.

You will be taught through a combination of lectures, seminars and tutorials. Your studies will be supported by trips to trade exhibitions, career fairs and guest speakers from the industry. You will be assessed through individual and group projects, case studies, oral presentations, time-constrained and written assignments.

Professional Recognition

BTEC qualifications are nationally and internationally recognised by employers and professional organisations. The recognition of the BTEC Higher National Certificate is a way for students to prepare for jobs and careers in their chosen field through membership of relevant

HND Progression

BTEC HND in Health and Social Care Management prepares students for a wide range of careers in health and social care institutions, e.g. hospitals, hospices, day centres and care homes.

Career pathways include management positions in health and social care sector, health promotion, welfare, social work, probation, education welfare, education support and occupational therapy.

On successful completion of your Higher National Diploma you can progress directly to a 1-year BA (Hons) degree top up.

Programme Content

You will study these modules:

HND in Health and Social Care Management (QCF Level 5)

Year 1

- Communicating in Health and Social Care Organisations
- Principles of Health and Social Care Practice
- Health and Safety in the Health and Social Care Workplace
- Personal and Professional Development in Health and Social Care
- Working in Partnership in Health and Social Care
- The Sociological Context of Health and Social Care
- Safeguarding in Health and Social Care
- Physiological Principles for Health and Social Care



HND in Health and Social Care Management (QCF Level 5)

Year 2

- Research Project
- Managing Human Resources in Health and Social Care
- Managing Financial Resources in Health and Social Care
- Understanding Specific Needs in Health and Social Care
- Contemporary Issues in Health and Social Care
- Supporting Significant Life Events
- Managing Quality in Health and Social Care
- Health Promotion



HND Higher National Diploma
HNC Higher National Certificate
Hospitality Management



Programme Fact File

Start Dates	September and January
Entry Requirements	Please see page 10
Study Mode and Duration	HND: Full-Time: 2 years, Part-Time (Day): 3 years, HNC: Full-Time: 1 year, Part-Time (Day): 2 years
UCAS Code	HNC: 25LN HND: 078N
Accreditation	HNC: Pearson BTEC (QCF Level 4) HND: Pearson BTEC (QCF Level 5)

Programme Overview

Hospitality is an exciting and challenging profession and this course provides you with solid knowledge of hospitality management preparing you for a career within this discipline.

The course combines hospitality and management subjects. You will explore key hospitality areas, such as customer services, food, beverage and rooms operations. You will also study management functions within hospitality such as finance and professional development.

You will be taught through a combination of lectures, seminars and tutorials. Your studies will be supported by trips to trade exhibitions, career fairs and guest speakers from the industry. You will also develop your transferable skills such as critical analysis, project management, strategic planning and efficient business communication, to ensure that you have the awareness to succeed in the changing business world.

You will be assessed through individual and group projects, case studies, oral presentations, time-constrained and written assignments.

Professional Recognition

BTEC qualifications are nationally and internationally recognised by employers and professional organisations.

The recognition of the BTEC Higher Nationals is a way for students to prepare for jobs and careers in their chosen field through membership of relevant professional bodies. Students and graduates may be offered exemptions by professional bodies from parts of their own qualifications in relation to membership. Exemptions will be available from various professional bodies in the fields of hospitality, management and marketing.

HNC Progression

BTEC Higher National Certificates are well-established and internationally recognised qualifications to offering graduates progression directly to employment. This course will prepare you for a range of careers in hospitality management.

You can also study further for a Higher National Diploma or degree in a related subject.

HND Progression

BTEC Higher National Diplomas are well-established and internationally recognised qualifications to offering graduates progression directly to employment. This course will prepare you for a range of careers in hospitality management.

On successful completion of your Higher National Diploma you can progress directly to a 1-year BA (Hons) degree top up.

Programme Content

You will study these modules:

HNC in Hospitality Management (QCF Level 4)

- The Contemporary Hospitality Industry
- Finance in the Hospitality Industry
- Customer Service
- Food and Beverage Operations Management
- Rooms Division Operations Management
- The Developing Manager
- The Travel and Tourism Sector
- Sustainable Tourism Development



HND in Hospitality Management (QCF Level 5)

Year 1

- The Contemporary Hospitality Industry
- Finance in the Hospitality Industry
- Customer Service
- Food and Beverage Operations Management
- Rooms Division Operations Management
- The Developing Manager
- The Travel and Tourism Sector
- Sustainable Tourism Development

Year 2

- Research Project
- Marketing in Hospitality
- Human Resource Management for Service Industries
- Hospitality Operations Management
- Hospitality Contract and Event Management
- Facilities Operations and Management
- Small Business Enterprise
- Personal and Professional Development

**HND Higher National Diploma
HNC Higher National Certificate**
Travel and Tourism Management



Programme Fact File

Start Dates	September and January
Entry Requirements	Please see page 10
Study Mode and Duration	HND: Full-Time: 2 years, Part-Time (Day): 3 years, HNC: Full-Time: 1 year, Part-Time (Day): 2 years

UCAS Code	HNC: 25LN HND: 078N
Accreditation	HNC: Pearson BTEC (QCF Level 4) HND: Pearson BTEC (QCF Level 5)

Programme Overview

BTEC Higher National Certificate and Higher National Diploma in Travel and Tourism Management are specialist vocational programmes, linked to professional body requirements and with a strong work

The courses combine travel, tourism and management subjects. You will explore key travel and tourism, such as tourist destinations, visitor attraction management and sustainable tourism. You will also study management functions within travel and tourism, such as, finance, marketing and professional development.

You will be taught through a combination of lectures, seminars and tutorials. Your studies will be supported by trips to trade exhibitions, career fairs and guest speakers from the industry. You will also develop your transferable skills such as critical analysis, project management, strategic planning and efficient business communication, to ensure that you have the awareness to succeed in the changing business world. You will be assessed through individual and group projects, case studies, oral presentations, time-constrained and written assignments.

Professional Recognition

BTEC qualifications are nationally and internationally recognised by employers and professional organisations. Their recognition is a way for students to prepare for jobs and careers in their chosen field through membership of relevant professional bodies.

Students and graduates may be offered exemptions by professional bodies from parts of their own qualifications in relation to membership. Exemptions will be available from various professional bodies in the fields of hospitality, management and marketing.

HNC Progression

BTEC Higher National Certificates are well-established and internationally recognised qualifications to offering graduates progression directly to employment. This course will prepare you for a range of careers in travel and tourism management.

You can also study further for a Higher National Diploma or degree in a related subject.

HND Progression

BTEC Higher National Diplomas are well-established and internationally recognised qualifications to offering graduates progression directly to employment. This course will prepare you for a range of careers in travel and tourism management.

On successful completion of your Higher National Diploma you can progress directly to a 1-year BA (Hons) degree top up.

Programme Content

You will study these modules:

HNC in Travel and Tourism Management (QCF Level 4)

- The Travel and Tourism Sector
- Finance and Funding in the Travel and Tourism Sector
- The Developing Manager
- Marketing in Travel and Tourism
- Contemporary Issues in Travel and Tourism
- Sustainable Tourism Development
- Tourist Destinations
- Visitor Attraction Management



HND in Travel and Tourism Management (QCF Level 5)

Year 1

- The Travel and Tourism Sector
- Finance and Funding in the Travel and Tourism Sector
- The Developing Manager
- Marketing in Travel and Tourism
- Contemporary Issues in Travel and Tourism
- Sustainable Tourism Development
- Tourist Destinations
- Visitor Attraction Management

Year 2

- Research Project
- Legislation and Ethics in the Travel and Tourism Sector
- Business Health Check
- Hospitality Provision in the Travel and Tourism Sector
- Special Interest Tourism
- Tour Operations Management
- Human Resource Management for Service Industries
- Personal and Professional Development

BA (Hons) Business Management (Top Up)



Programme Fact File

Award	Bachelor of Arts BA(Hons)
Start Dates	September and January
Entry Requirements	Please see page 10
Study Mode and Duration	Full-Time: 1 year, Part-Time (Day): 2 years Part-Time (Weekend) : 2 years
UCAS Code	NN12
Awarding Body	University of Derby

Programme Overview

You will build on and develop the knowledge you have already gained on your HND or foundation degree in business with a further stage of study which results in a full honours degree - BA (Hons) Business Management.

Covering global and strategic management issues, you will study the specialist areas of management and leadership and marketing. The module Issues in Global Business and Strategic Concepts is a case study of current business issues. It takes a discussion approach and is very practical. You will be looking at where things are going wrong, what could be done, what would you do?

Throughout the course you will be using current case studies and examples, and will also benefit from guest lectures from industry speakers and professional bodies. We will prepare you for the workplace as you develop the skills employers are looking for in their graduate employees, from report writing and analysis through to presentation skills.

Programme Content

You will study these modules:

1 Year Degree Top-Up

- Issues in Global Business and Strategic Concepts
- Developing and Managing Performance
- Principles and Practice of Leadership and Management
- Improving Business Performance
- Financial Statement Analysis



Progression

This degree gives you an excellent grounding in business, and you will be ready for a career in a variety of areas. You could be an operations manager, business analyst, business development manager, HR officer.

Past students now work for a wide range of companies from multi-nationals like Barclays and Shell, to small independent businesses. Some have even set up their own company on graduation.

On completion you could choose to progress straight on to a masters degree which is just one more year of full time study, and you will be eligible for a 10% fee discount as a Derby graduate.



Assessment

Assessment of the majority of modules by project-based coursework reflects the practical nature of this creative, practice-based discipline. The coursework element will focus on and around the range of projects and assignments you undertake throughout the Programme, including studio work, industrial 'live' projects, other practical work, presentations, written and oral reports and extended essays.

The nature of the briefs will primarily be 'open-ended' in allowing you to take an initial starting point, or framework, from which to develop ideas, concepts and skills as a part of developing your creative skills. Such a method of approach is inclusive in that it allows all learners, regardless of their level of current skills, to develop according to their ability and realise their potential.

Teaching & Learning

A variety of teaching and learning methods is used, including lectures, tutorials, seminars and laboratory sessions and independent study. You will also make use of the library and Internet facilities.

BSc (Hons) Civil Engineering (Top Up)



Programme Fact File

Award	Bachelor of Science BSc(Hons)
Start Dates	September and January
Entry Requirements	Please see page 10
Study Mode and Duration	Full-Time: 1 year, Part-Time (Day): 2 years Part-Time (Weekend) : 2 years
UCAS Code	H600
Awarding Body	University of Derby

Programme Overview

BSc (Hons) in Civil Engineering top-up programme has been developed in close collaboration with the relevant teams at the University of Derby and the London College. It follows vocational approach in teaching and assessment and is informed by the local market requirements.

The focus of the programme is in the areas of hydraulics, structural design and civil engineering management.

Many students find the construction, project management and engineering design elements appropriate to career or work aspirations because of their practical and professionally vocational nature, specifically utilising current software and systems.

The programme is taught by experienced professionals in the field using modern teaching learning and assessment methods providing a supportive friendly and involved student experience.

Programme Content

You will study these modules:

1 Year Degree Top-Up

- Innovation in Sustainable Engineering Design
- Independent Project (Engineering)
- Civil Engineering Hydraulics
- Civil Engineering Management
- Structural Design Project



Progression

As a graduate you will have the knowledge and skills to start your career, as well as, the academic base for a range of careers in civil engineering and construction. You can continue your professional development and further study in the discipline of civil engineering by taking an MSc in Civil Engineering and Construction Management.

Assessment

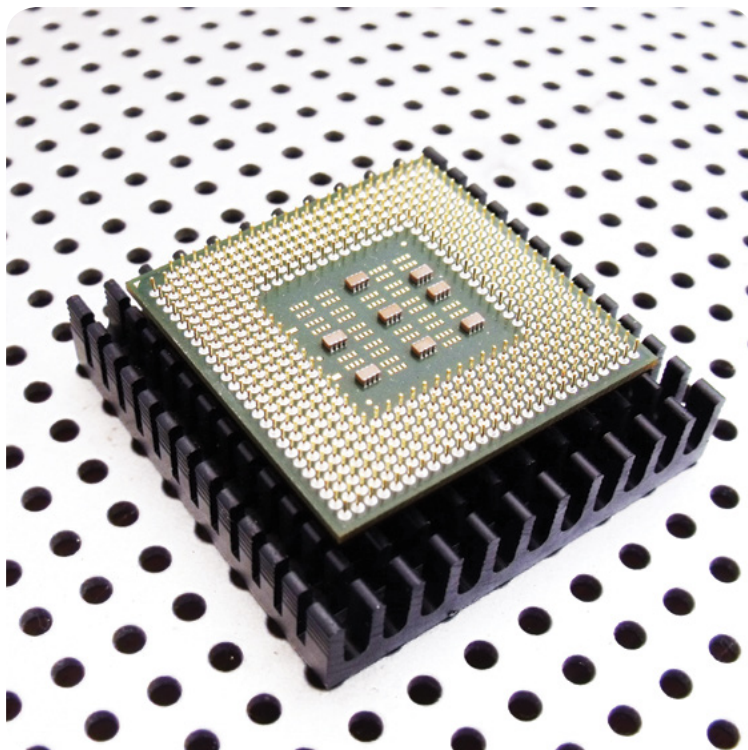
A variety of assessment methods will be used. Some modules are assessed through coursework only, others by a combination taken from portfolios of work, case studies, oral and graphic presentations, team work projects, computer testing and examinations, so providing a flexible and effective means of assessing your progress.



Teaching & Learning

You will be taught using demonstrations, laboratory sessions, lectures and tutorials. There will also be seminars and independent study sessions. You will make use of the library and Internet facilities.

BSc (Hons) Electrical and Electronic Engineering (Top Up)



Programme Fact File

Award	Bachelor of Science BSc(Hons)
Start Dates	September and January
Entry Requirements	Please see page 10
Study Mode and Duration	Full-Time: 1 year, Part-Time (Day): 2 years Part-Time (Weekend) : 2 years
UCAS Code	H600
Awarding Body	University of Derby

Programme Overview

Electrical engineering and electronics have transformed the way we live. We see this in everyday items like the laptop computer, television, mobile phone or MP3 player, or the lighting and equipment in our homes and work places. Less obvious, but just as important, is the contribution made to medicine, road transport, aerospace, and industry in general. This programme provides the education and training needed for holders of a relevant HND to gain an Honours degree, and hence contribute as a professional to these ground-breaking technologies.

This top-up programme is intended to give students who have successfully completed the HND or Foundation degree in Electrical and Electronic Engineering the opportunity to progress to Honours Degree level.

The programme is vocationally oriented. It has been developed by the University of Derby, and benefits from their close association with local and regional industry. It is further informed by their research and scholarship profile, and their contacts internationally.

Programme Content

You will study these modules:

1 Year Degree Top-Up

- Electrical Power Systems
- Electronic Devices and Systems
- Power Electronics
- Innovation in Sustainable Engineering Design
- Sensors and Control
- Independent Project (Engineering)



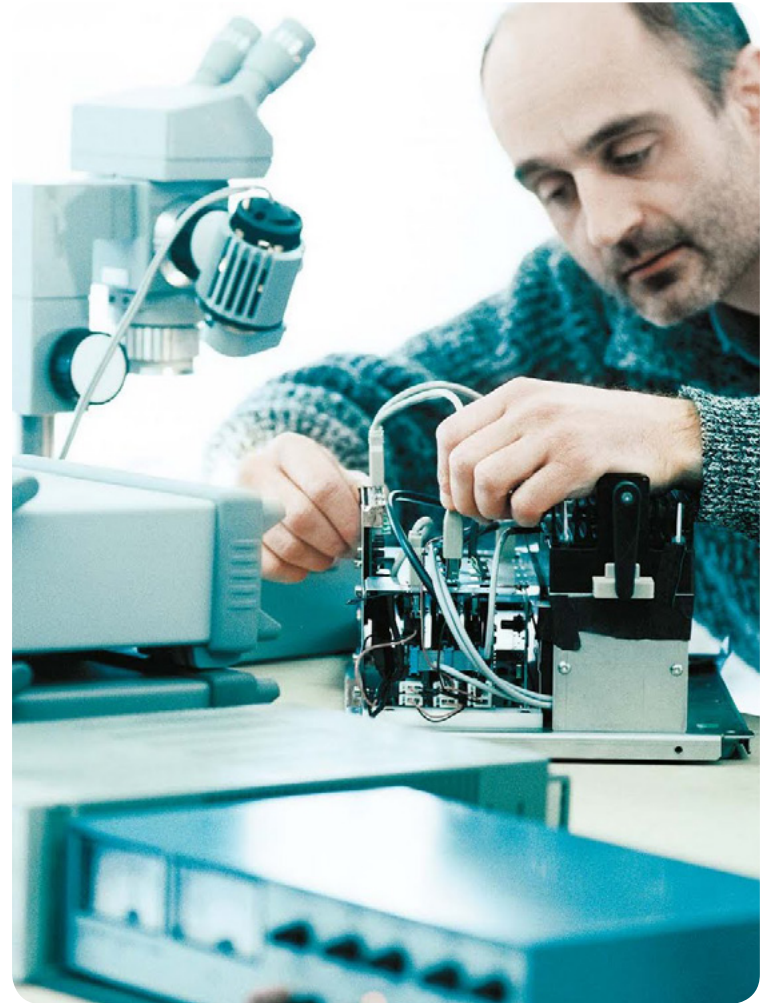
Progression

You will have a wide range of employment opportunities in electrical and electronic engineering when you graduate. You could move into areas as diverse as avionics, medical electronics, automotive electrical and electronic systems, electrical power generation, the rail industry or music and entertainment.

The numeracy and problem solving skills you will develop during this course will also give you a wide range of alternative career options, including teaching, banking, accountancy, technical sales or management.

Recent University of Derby graduates have moved into electrical or electronic system design, installation and commissioning, programming, maintenance, and related activities. Derby graduates can be found developing climate data loggers, micro processor systems in cars, safety systems for forklift trucks or railway signals.

You could also go on to further study by taking a relevant master's degree.



Assessment

A variety of assessment methods will be used. Some modules are assessed through coursework only, others by a combination taken from portfolios of work, case studies, oral and graphic presentations, team work projects, computer testing and examinations, so providing a flexible and effective means of assessing your progress.

Teaching & Learning

A variety of teaching and learning methods is used, including lectures, tutorials, seminars and laboratory sessions and independent study. You will also make use of the library and Internet facilities.

BA (Hons) Health and Social Care (Top Up)



Programme Fact File

Award	Bachelor of Arts BA(Hons)
Start Dates	September
Entry Requirements	Please see page 10
Study Mode and Duration	Full-Time: 1 year, Part-Time (Day): 2 years Part-Time (Weekend) : 2 years
UCAS Code	L510
Awarding Body	University of Derby

Programme Overview

If you are interested in social policy, equality and mental health and social care services, then this practical course is for you.

This course will give you the knowledge and skills you will need to become a confident, reflective worker in health, social or community settings. If you are already working in these areas, this course will really boost your career.

You will go on work placements in a range of settings, so you can use the knowledge and skills you have learned in the classroom, in a real work environment.

You can study this course full time for one year, or part time for two years, so you can study at a pace to suit you and your commitments.

Health and social care concerns the general wellbeing of people and ensuring that they are happy and leading a healthy lifestyle.

Providing help to those who are vulnerable or need that extra care at home, in hospital or in residential settings, will give you a great deal of personal achievement and career fulfilment. During this course you'll develop the knowledge and skills you need to become a confident, reflective worker in health, social or community settings, such as the NHS, Social Services or the voluntary and private sector.

Programme Content

You will study these modules:

1 Year Degree Top-Up

- Managing People, Services and Resources
- Independent Study
- Practice Based Learning
- Resourcing and Social Enterprise in Health and Social Care Organisations



Progression

There is a growing demand for health and social care workers who can respond to everyday patient needs and promote healthy living and prevent illnesses. So, when you graduate, you will be able to apply for jobs in health and social care organisations, health promotion, community work, social and public administration or similar fields. You could also go into the voluntary sector which offers a range of career opportunities.



Assessment

You will be assessed on your coursework, including your reports, essays, presentations and skills assessments. You will not have to take any exams. You will be allocated a personal tutor who will give you one to one support for your personal and professional development.

Teaching & Learning

A variety of teaching and learning methods is used, including lectures, tutorials, seminars and laboratory sessions and independent study. You will also make use of the library and Internet facilities.

BA (Hons) International Hospitality Management (Top Up)



Programme Fact File

Award	Bachelor of Arts BA(Hons)
Start Dates	September and January
Entry Requirements	Please see page 10
Study Mode and Duration	Full-Time: 1 year, Part-Time (Day): 2 years Part-Time (Weekend) : 2 years
UCAS Code	N832
Awarding Body	University of Derby

Programme Overview

As the international hospitality industry draws upon a variety of vocational, analytical and management skills, it is essential that the subject develops a balance between these various skills.

You are expected to develop critical analytic skills and formulate strategies that make the best use of available resources. You will develop transferable skills through a variety of real world learning activities and module assessments.

This course offers you:

- The knowledge and skills you will need for a successful career in the hospitality industry
 - The access to membership of the Educational Membership Scheme of the Institute of Hospitality, giving you great opportunities to network and make industry contacts.
 - All the extra benefits from getting recognised industry membership from the Institute of Hospitality.
- tutors with industry experience within different areas
support from your personal tutor and other staff throughout your course
- The chance to continue studying and gain a master's degree.

You will be taught using demonstrations, lectures and tutorial, developing skills such as brand awareness, recognition and understanding your market.

The programme aims to produce graduates with:

- Abilities to evaluate and apply vocationally relevant concepts associated with the operational and strategic management of financial, human and physical resources within an international hospitality management context.
- Understandings of and ability to apply concepts associated with the allocation of available resources within a global hospitality business.
- A range of intellectual, analytical and managerial skills and knowledge appropriate for obtaining positions in the contemporary service sector.
- The transferable skills that will empower them to pursue other career options and to adapt to changing patterns of employment.



Programme Content

You will study these modules:

1 Year Degree Top-Up

- Contemporary Issues
- Managing Cultural Issues in Hospitality
- Strategic Management
- International Resort Management
- Independent Study (Double Module)

Progression

Students who undertake the BA International Hospitality Management will be able to pursue a range of exciting careers within this sector. A significant number of University of Derby students attain a good degree and have gone on to management positions in the industry, ranging from private 4 star properties to a 5 star hotel resort. Some have become entrepreneurs and established their own thriving businesses

This programme also provides a foundation for further study at post-graduate level on Postgraduate Diploma in Hospitality and Tourism Management or a relevant master's degree.

Local and regional employers are represented via employer forums held at the University of Derby which are structured to encourage views on the design, content and delivery of hospitality programmes. The University of Derby works closely with local, national and international employers such as the Crieff Hydro, Gleneagles, Engineers Country Club, USA, White Manor Country Club USA, Carnegie Club (Skibo Castle), Hilton International, and Marriott.

Support is established using a university online e-recruitment portal, a method of tracking volunteering and work placements, academic engagement in conferences and generic and subject specialist skills.



There are also opportunities to participate in extra training courses run by external providers. Both these will enhance students' employability and link to the programme curriculum. You will be further supported by a personal tutor via your professional and academic development modules, who ensures that timely guidance and advice is available throughout the degree programme.

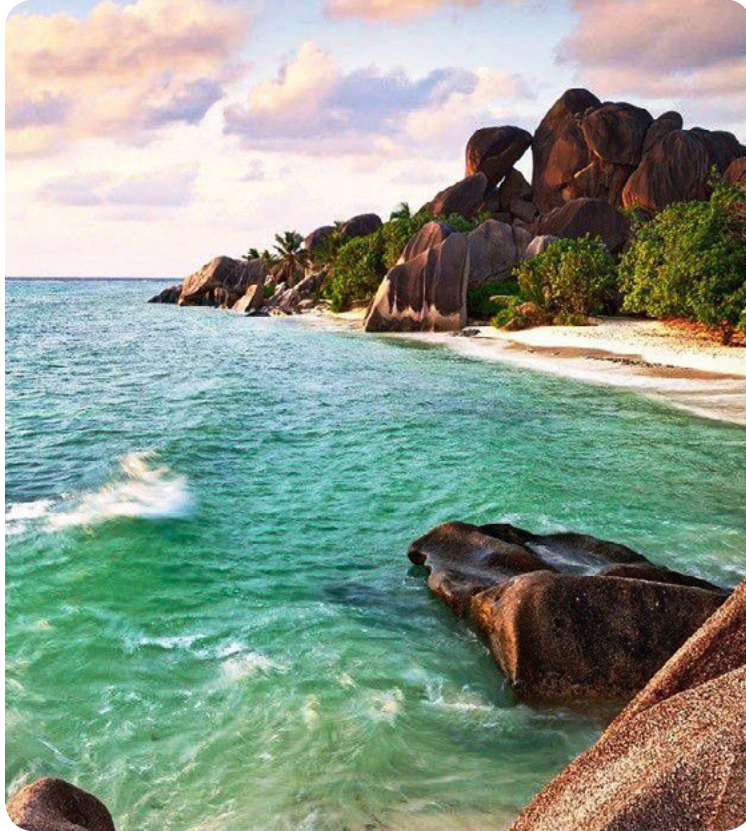
Assessment

Assessment of the majority of modules by project-based coursework reflects the practical nature of this creative, practice-based discipline. The coursework element will focus on and around the range of projects and assignments you undertake throughout the Programme, including studio work, industrial 'live' projects, other practical work, presentations, written and oral reports and extended essays. The nature of the briefs will primarily be 'open-ended' in allowing you to take an initial starting point, or framework, from which to develop ideas, concepts and skills as a part of developing your creative skills. Such a method of approach is inclusive in that it allows all learners, regardless of their level of current skills, to develop according to their ability and realise their potential.

Teaching & Learning

A variety of teaching and learning methods is used, including lectures, tutorials, seminars and laboratory sessions and independent study. You will also make use of the library and Internet facilities.

BA (Hons) International Tourism Management (Top Up)



Programme Fact File

Award	Bachelor of Arts BA(Hons)
Start Dates	September and January
Entry Requirements	Please see page 10
Study Mode and Duration	Full-Time: 1 year, Part-Time (Day): 2 years Part-Time (Weekend) : 2 years

UCAS Code	N832
Awarding Body	University of Derby

Programme Overview

This course focuses on the 'world' of tourism, the 'world' of the tourist, the virtual and real 'world' of travel and tourism and the 'world' of employment in tourism.

This course is about how you will fit into that changing world of tourism; which is achieved by giving you access to knowledge about 21st Century destinations, management practices, marketing techniques and products.

You will be exposed to the challenges faced by the industry as you work alongside tourism providers as part of your course and you will, therefore, be ready for employment within the 'world' of tourism.

Programme Content

You will study these modules:

1 Year Degree Top-Up

- Contemporary Issues
- Strategic Management
- Sustainable Tourism Management Systems
- The Business of e-Tourism
- Independent Study



Progression

University of Derby graduates succeed in finding employment in the tourism industry.

Graduates went into roles from Australian Tourist Board to Maldives Tourist Board, Destination Management Officer to Travel Counsellor, Airline Ground and Flight crew to Ground Handling Agent, Hotel Marketing Officer to Regional Marketing Officer, Travel Account Officer to Call Centre Agent/Reservations Officer and Business Travel Consultant to Tour Guide. 'The industry is global, the employment is global'.

You could also go onto study on a Postgraduate Diploma in Hospitality and Tourism Management or a relevant master's degree.

Assessment

Assessment of the majority of modules by project-based coursework reflects the practical nature of this creative, practice-based discipline. The coursework element will focus on and around the range of projects and assignments you undertake throughout the Programme, including studio work, industrial 'live' projects, other practical work, presentations, written and oral reports and extended essays.

The nature of the briefs will primarily be 'open-ended' in allowing you to take an initial starting point, or framework, from which to develop ideas, concepts and skills as a part of developing your creative skills. Such a method of approach is inclusive in that it allows all learners, regardless of their level of current skills, to develop according to their ability and realise their potential.

Teaching & Learning

A variety of teaching and learning methods is used, including lectures, tutorials, seminars and laboratory sessions and independent study. You will also make use of the library and Internet facilities.



Hospitality and Tourism Management



Programme Fact File

Award	Postgraduate Diploma (QCF level 7)
Start Dates	September and January
Entry Requirements	Please see page 10
Study Mode and Duration	Full-Time: 1 year, Part-Time: 2 years
UKPASS Code	45926
Awarding Organisation	Confederation of Tourism & Hospitality (CTH)

Programme Overview

The Diploma in Hospitality and Tourism Management is an innovative and challenging course of study, which encourages students to assess, evaluate and reflect upon relevant hospitality and tourism management theories and models. Students will also be given opportunities to review current practices in the international Hospitality and Tourism sector. The course is aimed at new graduates, as well as, hospitality and tourism professionals. The course will enhance your transferable skills such as strategic thinking, decision making, team work and leadership. You will be assessed by presentations and written assignments. The Postgraduate Diploma in Hospitality and Tourism Management has been accredited at QCF level 7 i.e. Master degree level. The CTH is an awarding organisation that aims to provide the highest standard of qualifications. The CTH achieves this through robust monitoring supported by industry and the UK government regulator, Ofqual. The CTH also has partnerships with major international employers and academic institutions.

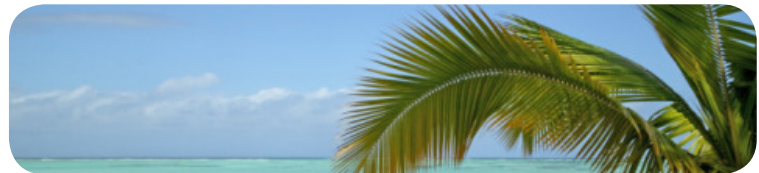
Progression

Management positions in hotels and resorts, country clubs, restaurants, leisure centres, travel agencies, tour operators, ski resorts and large food service companies providing management services to hospitals, universities and airlines. Specific positions available to graduates in hotels and resorts may include a rooms division manager, marketing manager, food and beverage manager and general manager. Graduates may also progress to further study, for example, on the MA, MSc or PhD.

Programme Content

You will study these modules:

- Hospitality and Tourism Marketing Strategies
- Management and Leadership across Cultures
- Hospitality and Tourism Strategic Planning
- Research Methods for Hospitality and Tourism Managers



International Qualifications



Entry Requirements for International Students Postgraduate Study

Applications for postgraduate studies may be considered from prospective overseas students whose undergraduate academic awards meet the following guidelines on foreign qualifications. There may in addition be English language entry requirements for non-native English speakers.

Abu Dhabi:	a good bachelor's degree
Afghanistan:	a good bachelor's degree
Albania:	a good bachelor's degree
Algeria:	a good bachelor's degree
Antigua:	a good bachelor's degree
Argentina:	at least a first degree with average marks of 8 or 9
Australia:	a good honours bachelor's degree
Austria:	the Diplomstudium or Magister with good grades
Bahamas:	a good bachelor's degree
Bahrain:	a good bachelor's degree or equivalent
Bangladesh:	a good bachelor's degree
Belgium:	the Licence/Licenciaat with good grades
Benin:	a good bachelor's degree
Bolivia:	at least a first degree with good marks
Bosnia:	a good bachelor's degree
Brazil:	the Bacheral, Licenciado or professional title with good grades
Brunei:	a good bachelor's degree
Bulgaria:	a good bachelor's degree

Burma:	a good bachelor's degree
Cameroon:	a good bachelor's degree
Canada:	a good honours bachelor's degree
China:	a good first degree
Colombia:	a good bachelor's degree
Congo:	a good bachelor's degree
Cote D'Ivoire:	a good bachelor's degree
Croatia:	a good bachelor's degree
Cuba:	a good bachelor's degree or equivalent
Cyprus:	a good bachelor's degree
Czech Republic:	the Diploma with good grades
Denmark:	a good bachelor's degree
Ecuador:	a good bachelor's degree
Egypt:	a good first degree
Eritrea:	a good bachelor's degree
Estonia:	a good bachelor's degree
Ethiopia:	a good bachelor's degree
Finland:	the Kandidaattii with good grades
France:	Licence with high grades and/or mention bien or mention très bien, or the Maîtrise
Francophone Africa:	Licence with very good grades.
Gabon:	a good bachelor's degree
Gambia:	a good bachelor's degree
Georgia:	a good bachelor's degree
Germany:	Diplom, Staatsexamen or Magister with good grades. We will consider you if you have taken the Vor-diplom or other intermediate qualification, provided that you have also taken a third year (at least two semesters) of substantive study beyond that point.
Ghana:	a good bachelor's degree
Greece:	a first degree
Grenada:	a good bachelor's degree
Holland:	a good bachelor's degree
Hong Kong:	a good bachelor's degree
Hungary:	a good first degree
Iceland:	a good bachelor's degree
India:	a good bachelor's degree
Indonesia:	the Magister is required for entry to a postgraduate programme
Iran:	a good bachelor's degree
Iraq:	a good bachelor's degree
Ireland:	a good bachelor's degree
Israel:	a bachelor's degree with GPA of not less than 3.0 or better

Italy:	Diploma di laurea	Qatar:	a good bachelor's degree or equivalent
Jamaica:	a good bachelor's degree	Romania:	a good first degree
Japan:	a good first degree	Russia:	a good university diploma
Kazakhstan:	a good bachelor's degree	Saudi Arabia:	a good bachelor's degree
Kenya:	a good bachelor's degree	Senegal:	a good bachelor's degree
Korea:	a good bachelor's degree	Seychelles:	a good bachelor's degree
Kosovo:	a good bachelor's degree	Sierra Leone:	a good bachelor's degree
Kuwait:	a bachelor's degree	Singapore:	a good bachelor's degree
Kyrgyzstan:	a good bachelor's degree	Slovakia:	first degree with good grades
Latvia:	a good bachelor's degree	Spain:	Licenciado
Lebanon:	a good bachelor's degree	Sri Lanka:	a good bachelor's degree
Liberia:	a good bachelor's degree	Sudan:	a good bachelor's degree
Libya:	a good honours bachelor's degree	Sweden:	the Magisterexamen
Lithuania:	a good bachelor's degree	Switzerland:	a good bachelor's degree
Macedonia:	a good bachelor's degree	Syria:	a good bachelor's degree
Malawi:	a good bachelor's degree	Tahiti:	a good bachelor's degree
Malaysia:	a good bachelor's degree	Taipei:	a good bachelor's degree
Maldives:	a good bachelor's degree	Taiwan:	a good bachelor's degree
Malta:	a good bachelor's degree	Tajikistan:	a good bachelor's degree
Mauritius:	a good bachelor's degree	Tanzania:	a good bachelor's degree
Mexico:	a good bachelor's degree	Thailand:	a good bachelor's degree
Moldova:	a good bachelor's degree	Trinidad:	a good bachelor's degree
Monaco:	a good bachelor's degree	Tunisia:	a good bachelor's degree
Mongolia:	a good bachelor's degree	Turkey:	a first degree normally with a good grades
Morocco:	Licence with high grades	UAE:	a good bachelor's degree
Mozambique:	a good bachelor's degree	Uganda:	a good bachelor's degree
Myanmar:	a good bachelor's degree	Ukraine:	a good bachelor's degree
Namibia:	a good bachelor's degree	USA:	BS, BA or JD with a GPA of not less than 3
Nepal:	a good bachelor's degree	Uzbekistan:	a good bachelor's degree
Netherlands:	the kandidaatsexamen with good grades	Venezuela:	a good bachelor's degree
New Zealand:	a good honours bachelor's degree	Vietnam:	a good bachelor's degree
Nicaragua:	a good bachelor's degree	Yemen:	a good bachelor's degree or equivalent
Nigeria:	a good bachelor's degree	Zaire:	a good bachelor's degree
North Cyprus:	a good bachelor's degree	Zambia:	a good bachelor's degree
Norway:	a good bachelor's degree	Zimbabwe:	a good bachelor's degree
Oman:	a good bachelor's degree		
Pakistan:	a good bachelor's degree		
Palestine:	a good bachelor's degree		
Peru:	a good degree with average marks of 8 or 9		
Philippines:	a master's degree is required for entry to a postgraduate]# programme		
Poland:	at least Licentiate with good grades		
Portugal:	the Licenciado		



College Location

